

# Hong Kong: The Regional Business Hub 香港：地區商務樞紐

Findings from a survey on overseas and Mainland parent companies running regional and local operations in Hong Kong

一項有關海外及內地母公司在港經營區域及本地業務的統計調查結果



Invest**HK** 投資推廣署

The Government of the Hong Kong  
Special Administrative Region

[www.investhk.gov.hk](http://www.investhk.gov.hk)

#investhk



Follow us on 

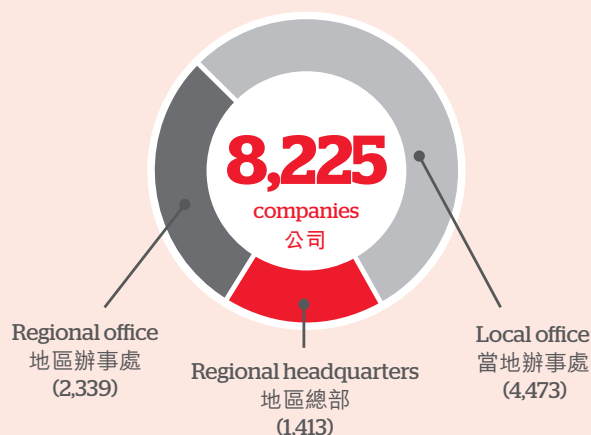
# Hong Kong - Ideal business hub in Asia

## 香港 — 亞洲理想商務樞紐



Overseas and Mainland companies continue to value Hong Kong as the prime location for regional operations in Asia, mainly because of its simple tax system and low tax rate, free flow of information, free port status, geographical location and corruption-free government.

海外及中國內地企業繼續認同香港為擴展亞洲業務的理想商貿樞紐，主要因為香港擁有簡單稅制及低稅率、資訊的自由流通性、自由港地位、地理位置，以及廉潔的政府。



The annual survey\* findings show that the total number of these companies\* with parent companies overseas and in Mainland China has reached 8,225 in 2017. 3,752 of these companies served as regional headquarters or regional offices.

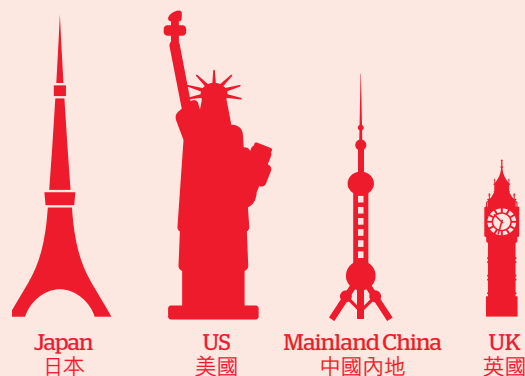
根據一項按年統計調查\*顯示，於2017年，母公司在海外及內地的駐港公司\*共有8,225家。在這些公司中，3,752家為地區總部或地區辦事處。

### Top 4 四大來源地



Despite the uncertainty in global economy, 20 percent of companies were confident and indicated that they might expand their business in Hong Kong over the next three years.

儘管環球經濟存在不明朗因素，有20%的公司對前景具信心並表示他們可能會在未來三年擴充香港的業務。



Over half of the companies come from four countries. Japan topped the list, followed by the US, Mainland China and the UK.

The major lines of business were import/export trade, wholesale and retail; financing and banking; and professional, business and education services.

超過一半的公司來自四個國家，順次為日本、美國、中國內地及英國。

主要經營的業務為進出口貿易、批發及零售業；金融及銀行業；和專業、商用及教育服務業。

\* This leaflet is based on the findings of the "2017 Annual Survey of Companies in Hong Kong Representing Parent Companies Located outside Hong Kong" released on 26 October 2017. To view the full survey report, please visit the website of the Census and Statistics Department: [www.censtatd.gov.hk](http://www.censtatd.gov.hk).

# Please note that references to "companies" in this leaflet refer to the regional headquarters / regional offices / local offices in Hong Kong set up by overseas and Mainland parent companies. Full definitions of these terms can be found on the back page.

\* 此單張是根據「2017年代表香港境外母公司的駐港公司按年統計調查」的結果所編製的。有關結果已於2017年10月26日發布。如欲閱覽統計調查報告全文，請登入政府統計處網站：[www.censtatd.gov.hk](http://www.censtatd.gov.hk)。

# 此單張內所提及的「公司」是指海外及內地母公司設於香港的地區總部 / 地區辦事處 / 當地辦事處，詳細定義可在本單張背頁內找到。



## Number of Companies Reaches an All Time High 公司數目創新高

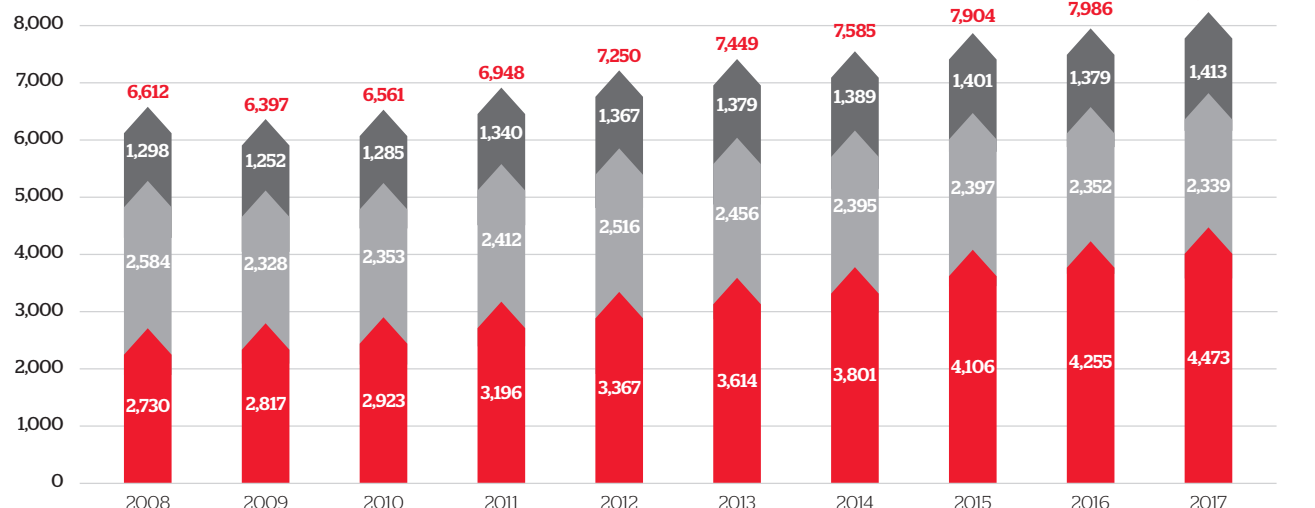
Hong Kong continues to be the preferred base for companies looking to set up or manage regional operation in Asia.

對於尋求經營地區及當地業務的海外及內地公司，香港繼續成為亞洲的首選城市。

**8,225**  
companies  
公司

較2008年增長  
**24% ↑**  
up on 2008

Number of Companies  
公司數目



## From Around the World 來自世界各地

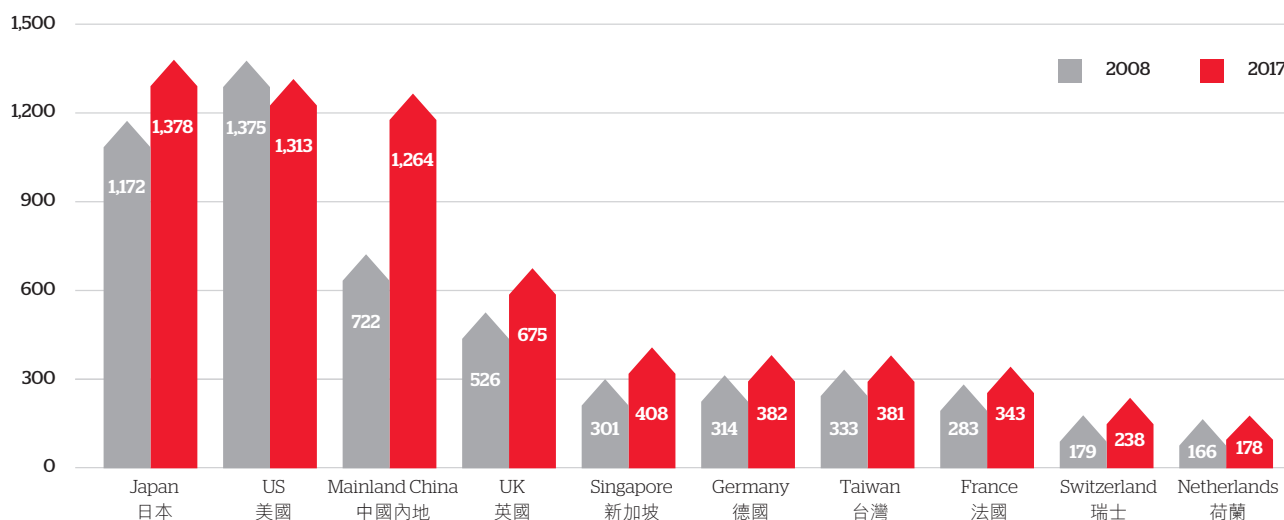
For companies from Japan, the US, Mainland China and the UK, Hong Kong continues to be a highly attractive business location.

對於來自日本、美國、中國內地和英國的公司，香港繼續成為極具吸引力的商務選址。

### Country/Territory where the parent company was located (only the top 10 in 2017 are shown)

母公司所在的國家 / 地區 (只顯示2017年首10位)

Number of Companies  
公司數目





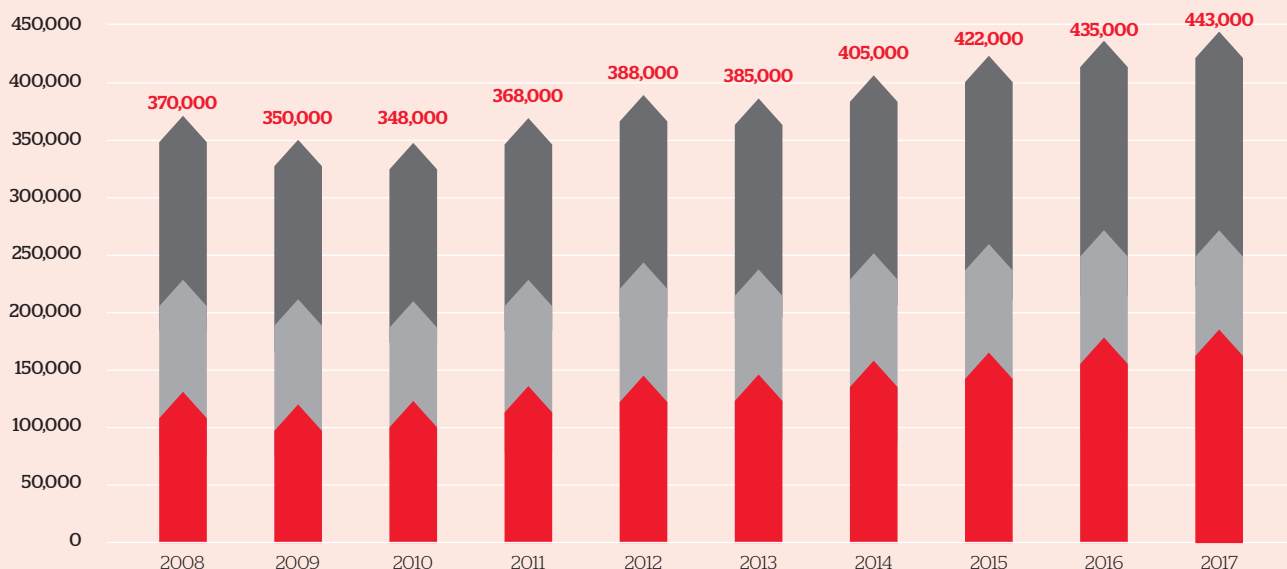
## Boosting Job Opportunities 為各行業創造就業機會

The companies surveyed created a total of 443,000 jobs.  
此統計調查內的公司為香港創造了 443,000 個就業機會。

較 2008 年增長\* **19.7% ↑** up on 2008#

Number of Persons Engaged\*  
就業人數 \*

- Local Office 當地辦事處
- Regional Office 地區辦事處
- Regional Headquarters 地區總部



\* Figures are rounded to the nearest thousand 數字是四捨五入至最接近的千位數

# Percentage changes are derived from unrounded figures 變動百分率是未經四捨五入數字計算出來



## From Small to Large Companies 從小公司到大公司

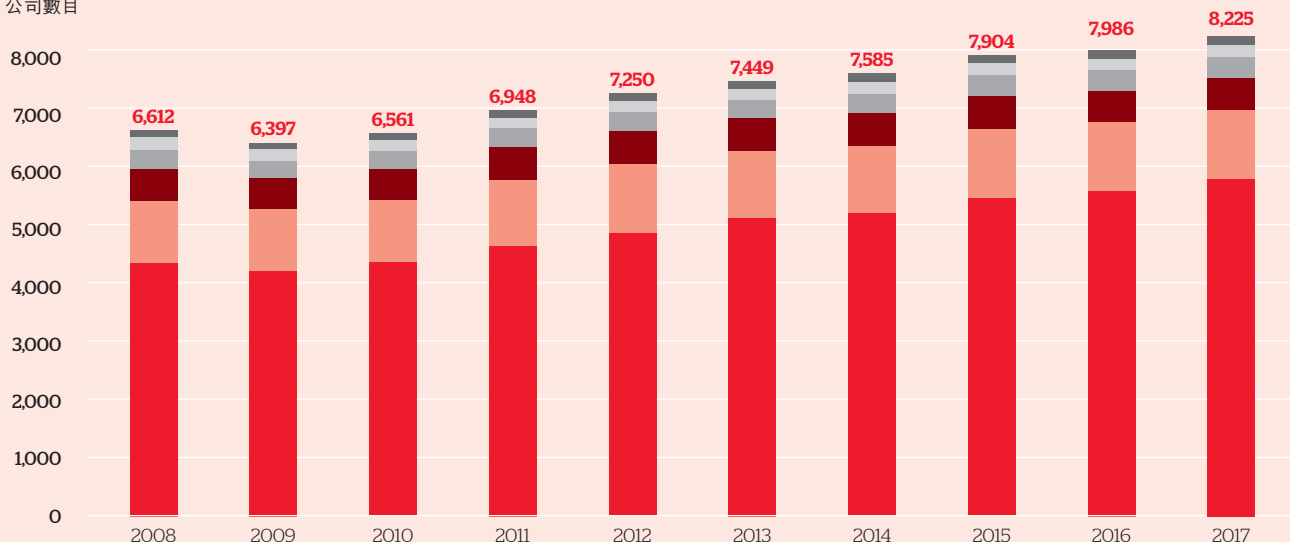
Small and medium-sized companies are an important driving force in Hong Kong's economic development.

中小型企業素來是本地經濟發展的主要動力。

2017 年小型公司 (就業人數少於 20 人) 佔

**70.2%**  
Small companies  
(engaging less than 20 persons) in 2017

Number of Companies  
公司數目



Number of Persons Engaged 就業人數

<20 20-49 50-99 100-199 200-499 500+



## From a Range of Sectors 來自不同行業

Hong Kong's appeal as a trading, retail and financial centre in Asia is as strong as ever.

香港作為亞洲貿易、零售業及金融中心的吸引力一直有增無減。

進出口貿易、批發及零售業佔

**46.3%**

Import/export trade,  
wholesale & retail

金融及銀行業佔

**19.7%**

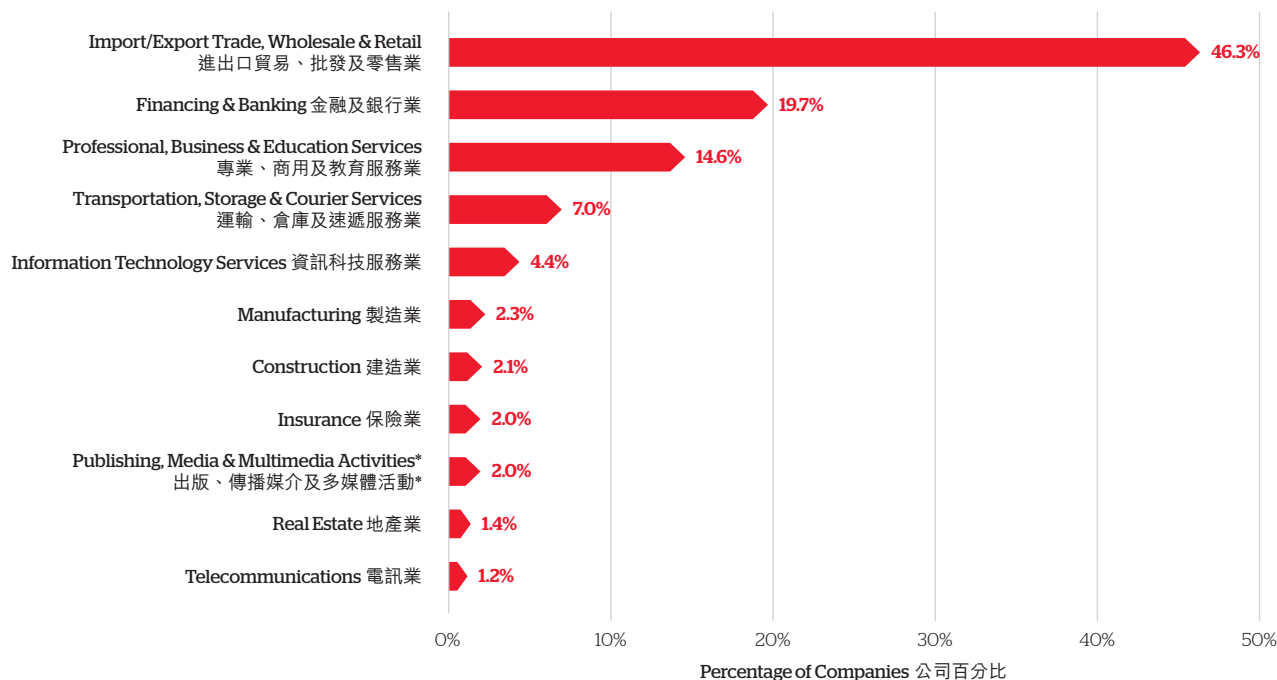
Financing & banking

專業、商用及教育服務業佔

**14.6%**

Professional, business &  
education services

Top 10 Sectors 首 10 名行業



\* Including publishing activities; motion picture, video and television programme production, sound recording and music publishing activities; and programming and broadcasting activities. 包括出版活動：電影、錄像及電視節目製作活動、錄音及音樂出版活動；以及節目編製及廣播活動。



## Top Five Favourable Factors Attracting Companies to Set Up Business in Hong Kong 吸引公司選擇在港設立業務的首五項有利因素



Simple tax system & low tax rate  
簡單稅制及低稅率



Free flow of information  
資訊的自由流通性



Free port status  
自由港地位



Geographical location  
地理位置



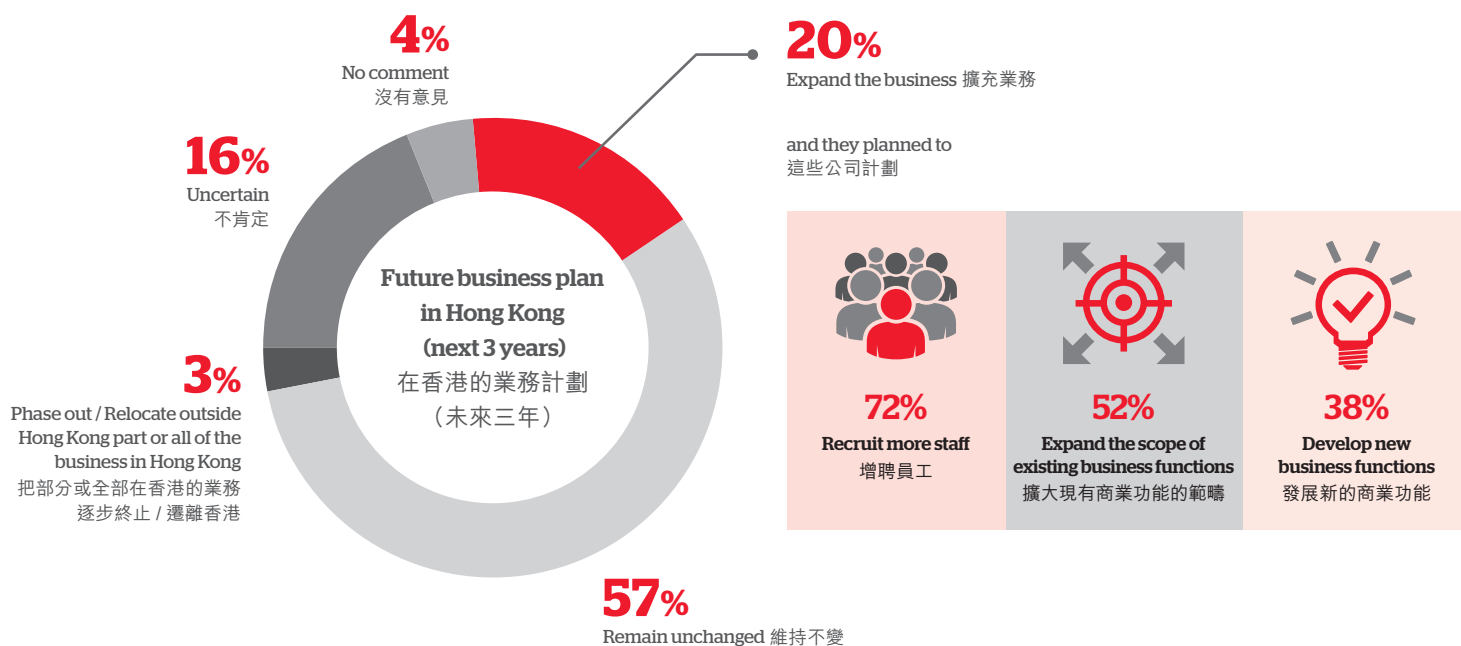
Corruption-free government  
廉潔的政府



## And Their Future Business Plans 以及他們未來的業務計劃

20 percent of the companies surveyed had plans to expand their existing business in the next three years either by increasing staff, expanding the scope of existing business functions or developing new business functions.

20% 的受訪公司表示計劃在未來三年擴充業務，可能會增聘人手、擴大現有商業功能的範疇或發展新的商業功能。



## Methodology and Definitions 統計調查方法及定義

This leaflet is based on the findings of the 2017 Annual Survey of Companies in Hong Kong Representing Parent Companies Located outside Hong Kong.

This annual survey is conducted by the Census and Statistics Department in collaboration with Invest Hong Kong. Data collected in the 2017 Survey refer to the position as at 1 June 2017.

It collects information from regional headquarters, regional offices and local offices in Hong Kong that represent their parent companies located outside Hong Kong.

此單張是根據「2017年代表香港境外母公司的駐港公司按年統計調查」的結果所編製的。

這項按年統計調查由政府統計處及投資推廣署攜手進行。2017年統計調查所搜集的資料，是以2017年6月1日作為統計日期。

統計調查對象為那些代表香港境外母公司在香港的地區總部、地區辦事處及當地辦事處。

For the purpose of the survey:

A **regional headquarters** is an office that has managerial control over offices and/or operations in the region (i.e. Hong Kong plus one or more other places) on behalf of its parent company located outside Hong Kong;

A **regional office** is an office that coordinates offices and/or operations in the region (i.e. Hong Kong plus one or more other places) on behalf of its parent company located outside Hong Kong;

A **local office** is an office that only takes charge of the business in Hong Kong (but nowhere else) on behalf of its parent company located outside Hong Kong; and

A **parent company located outside Hong Kong** is a company or an organisation operating outside Hong Kong that has final management control over its offices in any region.

其定義如下：

**地區總部**是指代表香港境外母公司對區內（即香港及另一個或多個地方）各辦事處及 / 或運作擁有管理權的一家辦事處；

**地區辦事處**是指代表香港境外母公司負責協調區內（即香港及另一個或多個地方）各辦事處及 / 或運作的一家辦事處；

**當地辦事處**是指代表香港境外母公司只負責香港（但不負責任何其它地方）業務的一家辦事處；及

**香港境外的母公司**是指對其轄下在任何地區之內辦事處的運作擁有最終管理權的香港境外公司或組織。

To view the full report, please visit  
如欲閱覽統計調查報告全文，請登入



[www.censtatd.gov.hk](http://www.censtatd.gov.hk)

To find out how to set up or expand your business in Hong Kong, please visit  
查詢如何在港開業或擴充業務，請登入



[www.investhk.gov.hk](http://www.investhk.gov.hk)



香港特別行政區 政府統計處  
Census and Statistics Department  
Hong Kong Special Administrative Region



ASIA'S WORLD CITY 亞洲國際都會